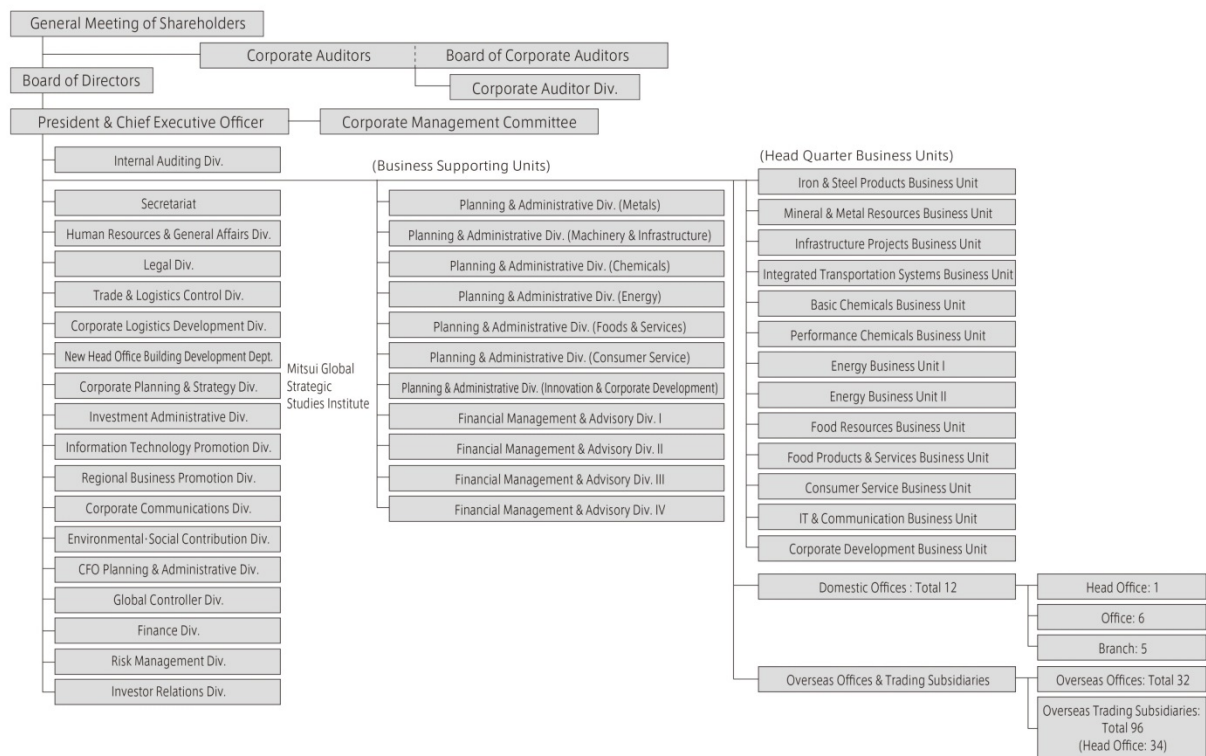


Corporate Information

Corporate Profile

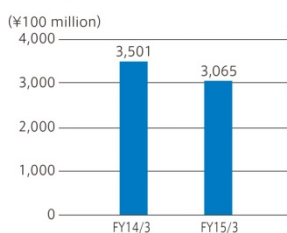
Company Name	MITSUI & CO., LTD.	Number of Employees	6,006 (Consolidated 47,118) (As of Mar. 31, 2015)
Date of Establishment	Jul. 25, 1947	Number of Offices and Overseas Trading Subsidiaries	140 offices in 65 countries / regions Domestic: 12 (Head Office: 1 Offices: 6 Branches: 5) Overseas: 128 (Overseas offices: 32 Overseas trading subsidiaries: 96 (Head Offices: 34)) (As of Jul. 1, 2015)
Head Office	1-3, Marunouchi 1-chome, Chiyoda-ku, Tokyo 100-8631, Japan Nippon Life Marunouchi Garden Tower (registered head office location) 3-1, Ohtemachi 1-chome, Chiyoda-ku, Tokyo 100-8631, Japan JA Building	Major Business Areas	Utilizing our global operating locations, network and information resources, we are multilaterally pursuing business that ranges from product sales, worldwide logistics and financing, through to the development of major international infrastructure and other projects in the following fields: Iron & Steel Products, Mineral & Metal Resources, Infrastructure Projects, Integrated Transportation Systems, Chemicals, Energy, Food Resources, Food Products & Services, Consumer Services, IT & Communication Business, Corporate Development Business.
Representative	Tatsuo Yasunaga, President and Chief Executive Officer		
Common Stock	¥341,481,648,946 (As of Mar. 31, 2015)		

Organization Chart (As of July 1, 2015)



Financial Information (consolidated)

Net Income



Operating Segment Net Income (FY15/3)

