

Company Profile

Corporate Profile

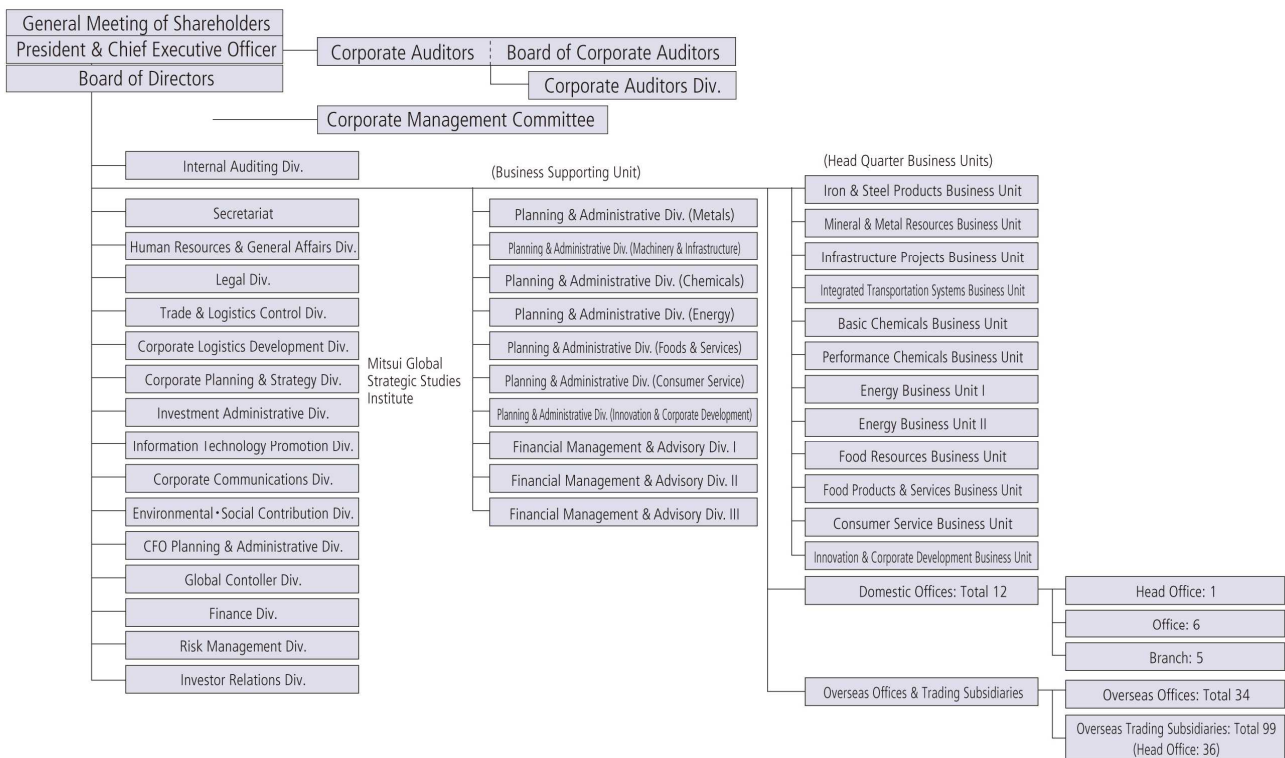
Company Name MITSUI & CO., LTD.
Date of Establishment Jul. 25, 1947
Head Office 2-1, Ohtemachi 1-chome, Chiyoda-ku, Tokyo 100-0004, Japan
*As of November 25, 2014, the location of our head office will change to the following address

- 1-3, Marunouchi 1-chome, Chiyoda-ku, Tokyo 100-8631, Japan
Nippon Life Marunouchi Garden Tower (registered head office location)
- 3-1, Ohtemachi 1-chome, Chiyoda-ku, Tokyo 100-8631, Japan
JA Building

Representative Masami Iijima, President and Chief Executive Officer
Common Stock ¥341,482 million (As of March 31, 2014)
Number of Employees 6,097 Consolidated 48,090 (As of March 31, 2014)

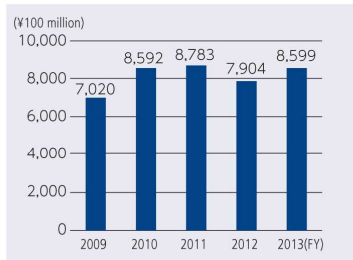
Number of Offices and Overseas 145 (as of June 1, 2014)
 Domestic: 12 offices
 (Head Office : 1, Offices : 6, Branches : 5)
Trading Subsidiaries Overseas: 133 offices
 (Overseas offices : 34, Overseas trading Subsidiaries 99 (Head Offices : 36))
Major Business Areas Utilizing our global operating locations, network and information resources, we are multilaterally pursuing business that ranges from product sales, worldwide logistics and financing, through to the development of major international infrastructure and other projects in the following fields: Iron & Steel Products, Mineral & Metal Resources, Infrastructure Projects, Integrated Transportation Systems, Chemicals, Energy, Food Resources, Food Products & Services, Consumer Services, Innovation & Corporate Development Businesses.

Organization Chart (as of June 1, 2014)

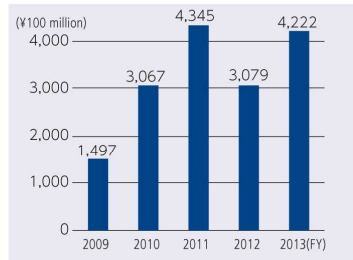


Financial Information (Consolidated)

Gross Profit



Net Income



Operating Segment Net Income (FY2013)

