

Roadmap to Net-Zero Emissions

Representative Director, Executive Vice President
Chief Strategy Officer

Shinichiro Omachi

Mitsui's GHG emission reduction targets



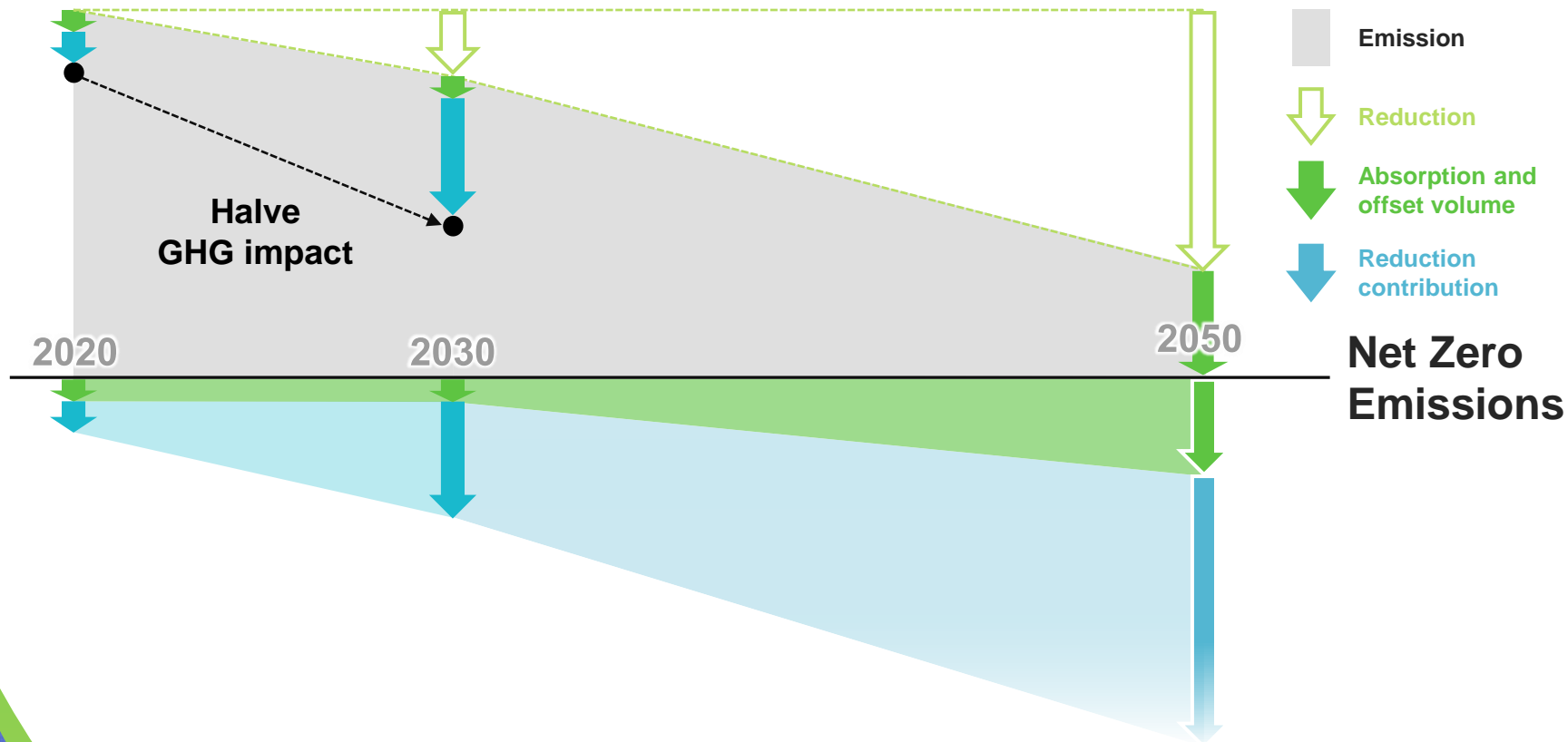
2030
Halve
GHG impact



2050
Net-zero
emissions

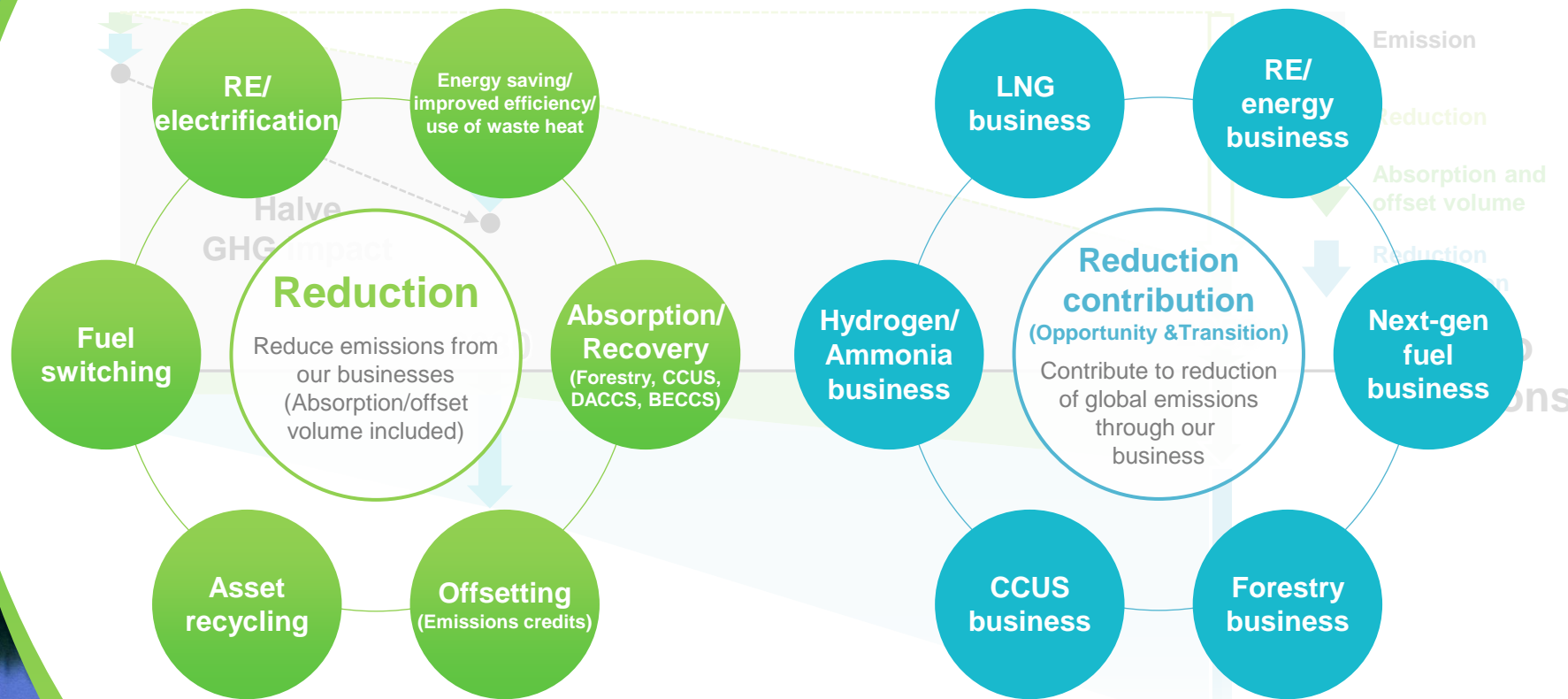
Scope: Mitsui & Co. and its consolidated subsidiaries; Scope 1 + Scope 2 + Scope 3 Category 15

Mitsui's GHG emission reduction targets: path to achievement



Transition assumes only reduction contribution attributable to the company in the future

Methods for emission reduction and reduction contribution



* CCUS: Carbon dioxide Capture Utilization and Storage,
DACCS: Direct Air Carbon dioxide Capture and storage, BECCS: Bioenergy with Carbon Capture and Storage

GHG emissions breakdown

FY March 2020

(Unit: million MT-CO₂e)

2030 target

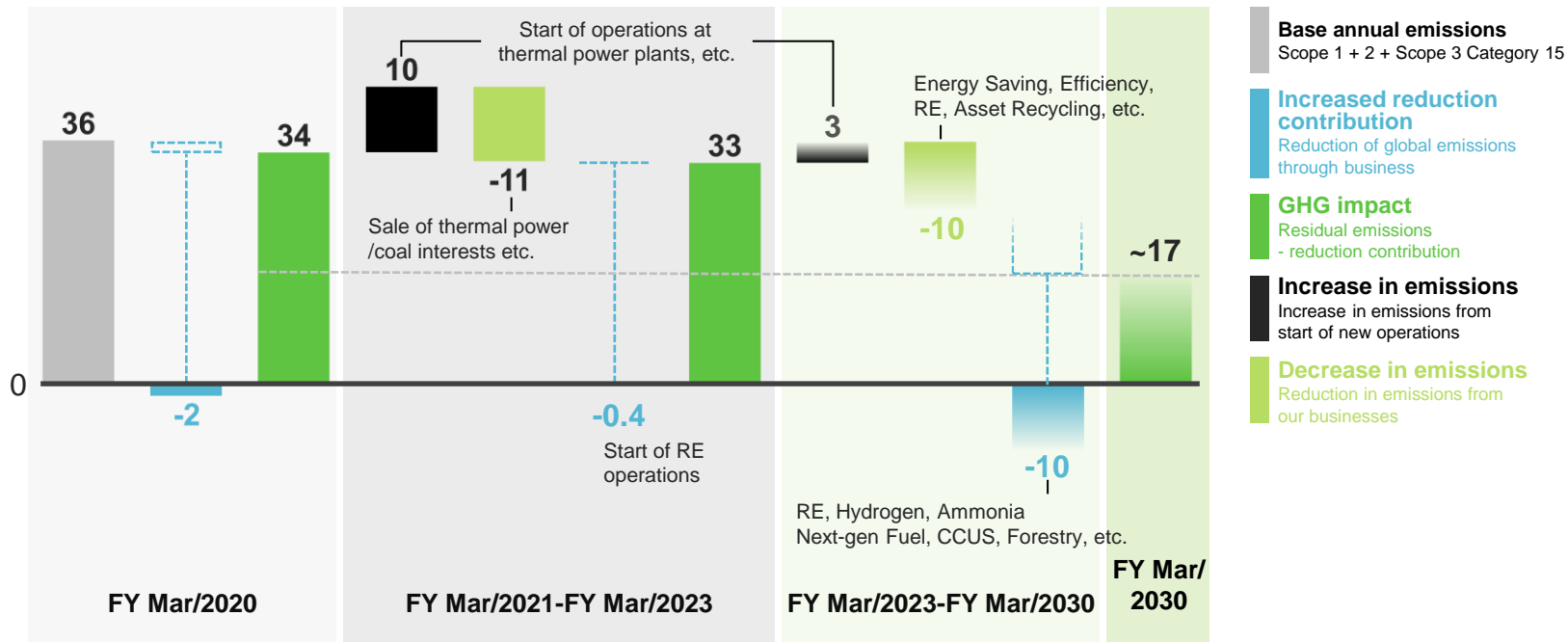
Scope1+2	4	Mitsui & Co. and Consolidated Subsidiaries	1	50% reduction
		Un-inco JV	3	
Scope3 Category 15 (investments)	32	Power Generation Business	19	
		Mineral & Metal Resources	8	
		Energy	3	
		Others	2	
Total	36			
		Reduction contribution and absorption volume	-2	
		GHG Impact	34	50% reduction

* Un-inco : Un-incorporated Joint Venture

Path to halving GHG impact by 2030

Scope 1 + 2 + Scope 3 Category 15 (investments)

(Unit: million MT-CO₂e)



Notes: These figures are based on current assumptions and subject to change.

The increased reduction contribution shown in this graph includes figures corresponding to the absorption and offset volume shown in the graph on slide 3.

Internal measures to address climate change

Scenario analysis

Ascertain changes in external environment and profit impact on existing business under 2°C scenario

Internal carbon pricing system

Investigate impact of 2°C scenario and countermeasures for new business

Environmental ("Green") Business Assessment Working Group

Evaluate strategic significance and value of new business from ESG perspective

GHG reduction contribution calculation

Quantitatively evaluate and provide visualization of reduction contribution by each business

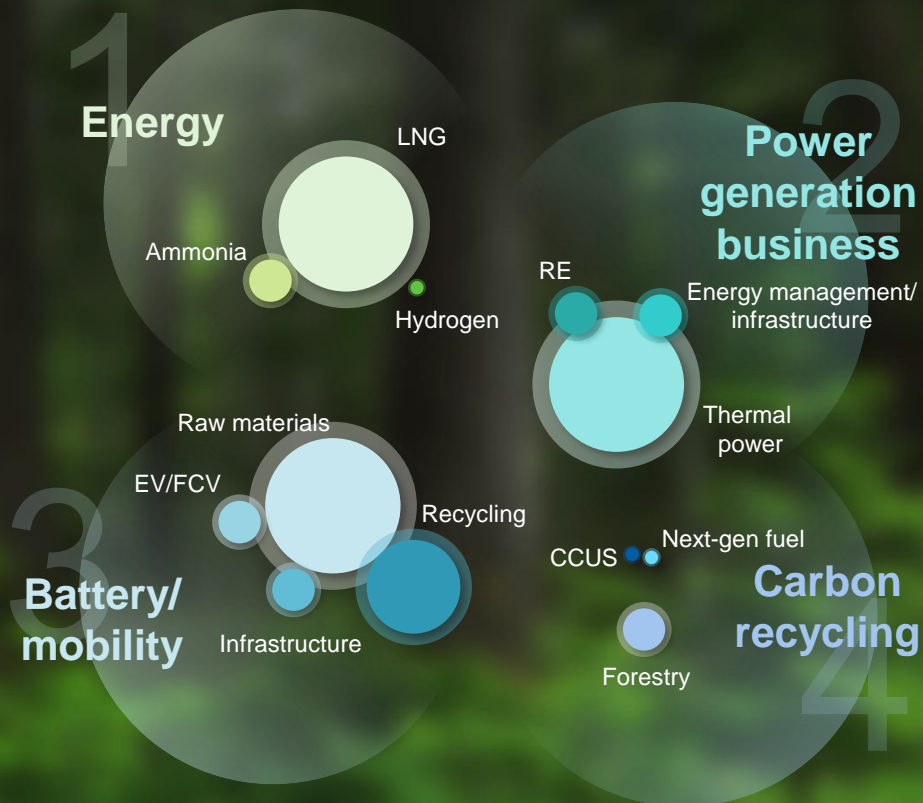


**Identify the future impact of climate change and
incorporate associated growth opportunities that arise**
Establish a more robust business platform

Mitsui & Co.'s green transformation



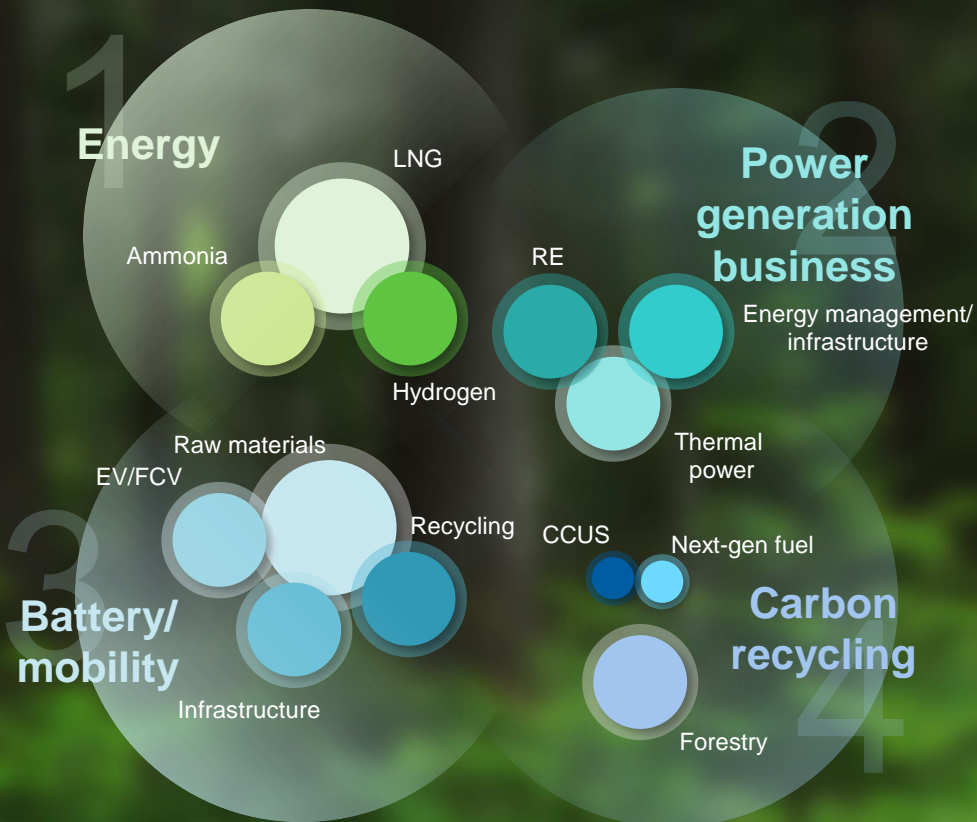
Now



Mitsui & Co.'s green transformation

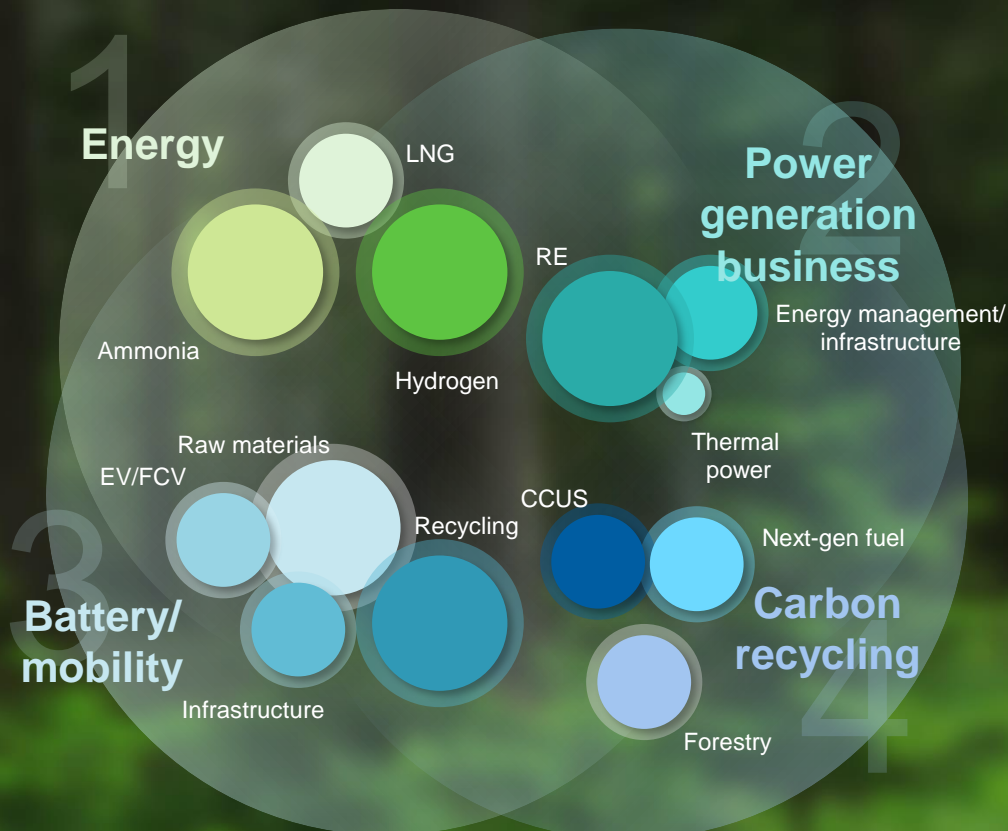


Now
Cross-industry
collaboration with
partners
2030



Mitsui & Co.'s green transformation

2030
Innovation
2050



1. Energy – Initiatives toward 2030

LNG

Secure stable supply and transition to clean energy

Existing LNG businesses
Arctic2
Mozambique LNG

Ammonia

Promote cross-company initiatives from blue/green ammonia production to transportation/use

Waitsia
Ammonia-powered vessels

Hydrogen

Work to realize hydrogen society through cross-industry collaboration, from production and supply of clean hydrogen to FCV components

Hiringa
FirstElement Fuel
Hexagon Composites

2. Power business – Initiatives toward 2030

Renewable energy

Supply clean and affordable power matched to region

Onshore and offshore wind power/
solar/hydro/biomass/geothermal

Energy
Management
business

Contribute to low
carbon society through
power adjustment
using rechargeable
batteries

The Mobility House
Sunverge
Tokai 2
Stem

Equipment
manufacturing/
maintenance

Contribute through
manufacturing and
maintenance of
offshore/onshore
wind power

Horizon Ocean Management
Global Energy
GRI

3. Battery/mobility – Initiatives toward 2030

Materials/ parts

From mining of metals
to manufacturing of parts

Copper, nickel, lithium, graphite

TEMICO
Forsee Power
Hexagon Composites

EV & FCV

Investment in
EV/FCV OEMs

Lucid
CaetanoBus

Infrastructure

Infrastructure
business for
EV charging stations/
hydrogen stations

EV Connect
FirstElement Fuel
Hiringa

Recycling

Recycling business
for battery and
vehicle body scrap

GEM
Sims

4. Carbon recycling – Initiatives toward 2030



360° business innovation.

